

Online Trading Platform User Guide



www.dbsvickers.com

Disclaimer: The information contained in this document is intended only for use during the presentation and should not be disseminated or distributed to parties outside the presentation. DBS Vickers Securities accepts no liability whatsoever with respect to the use of this document or its contents.



Live more,
Bank less

Introduction

This guide aims to help you understand and operate your DBS Vickers Online Trading Account with visual illustrations. It will help to exemplify and address some common user experience issues. We hope that with this guide, you will be able to navigate the DBS Vickers Online Trading Platform with ease.

Things to note



You will require a 2nd Factor Authentication (2FA) to log in to DBS Vickers online trading platform.

This is a One-Time PIN (OTP) which can be obtained via a secure device or SMS.



Update your mobile number via DBS Vickers Online Trading Platform under

“My Profile”



“Update Personal Details” page to receive the SMS OTP.

Table of Content

How to Log In	Page 5 - Page 7	My Account	Page 34 - Page 42
Homepage	Page 8 - Page 9	<ul style="list-style-type: none">▶ Balances▶ Holdings▶ Outstanding Contracts▶ Custom Portfolio▶ History▶ eStatements▶ Account Management	
Trade	Page 10 - Page 21	IPO	Page 43
<ul style="list-style-type: none">▶ Place Order▶ Order Status▶ Watchlist▶ Advanced Market Data▶ Transaction Screener▶ Commission Calculator		Resources	Page 44
Markets	Page 22 - Page 33	My Profile	Page 45 - Page 49
<ul style="list-style-type: none">▶ News▶ Insights▶ Reports▶ Stock Screener▶ Stock Search▶ Stock Comparer▶ Charting▶ Market Overview		<ul style="list-style-type: none">▶ Change Password▶ Update Personal Details▶ Set Alerts▶ Customise Site▶ Enrol for eStatement▶ 2FA	
		Disclaimer	Page 50



- My Accounts** Summary
- Transfer** Local or Overseas
- Pay** Bills and Cards
- Cards** Activate and Manage
- Invest** Manage your Wealth
- Apply** New Accounts
- Request** Statements or Services

Welcome Back

1

Your last login was 01:46 PM on Tuesday 20th March 2018 (Singapore)

There are [no new messages](#) for you.

Your Financial Overview

March 2018



2

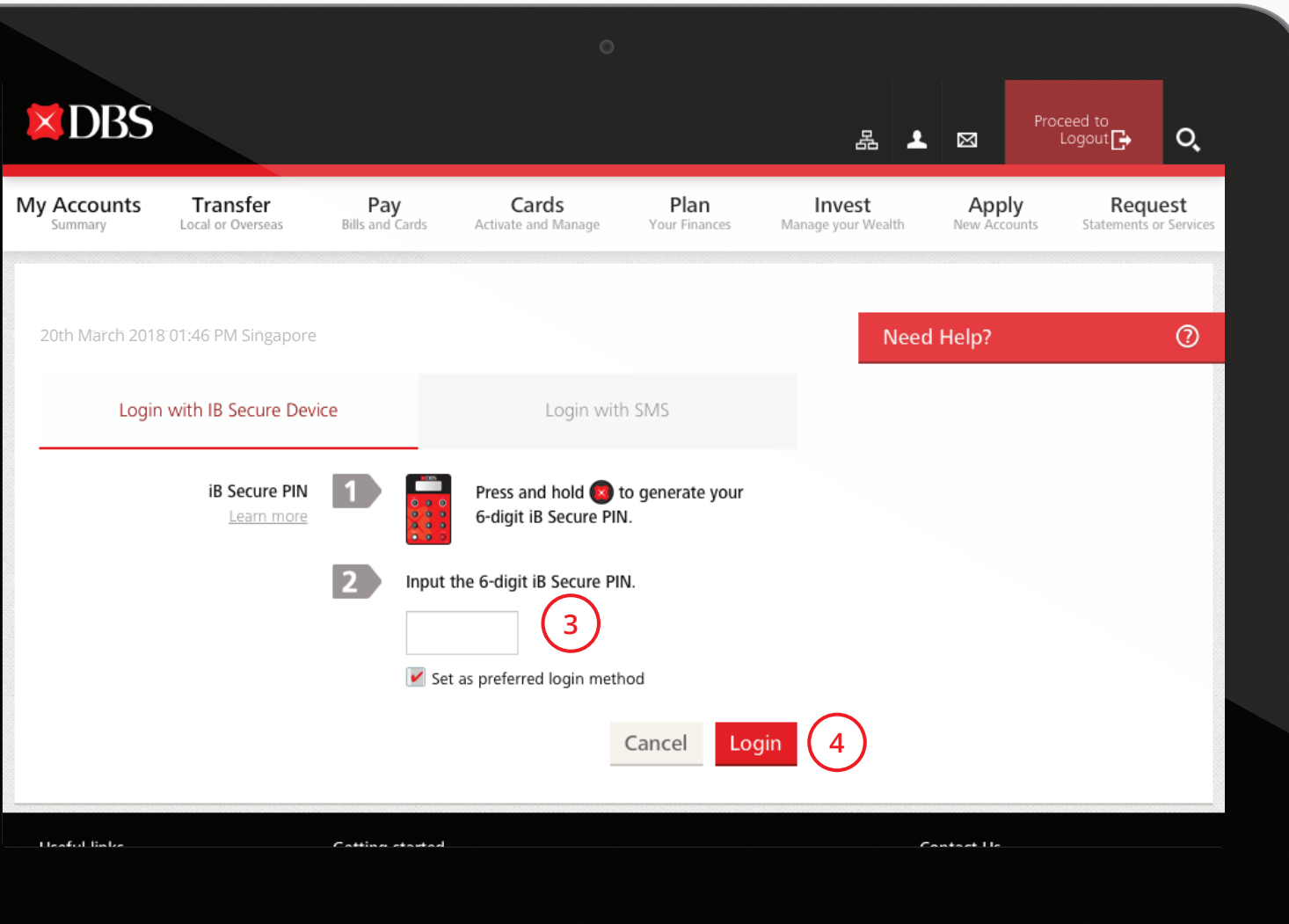
- DBS Vickers Online Trading
- Unit Trusts
- Electronic Shares Application (ESA)
- Electronic Payment for Shares (EPS)
- Singapore Government Securities (SGS)
- More Investment Services

● Transfer 100%

View More

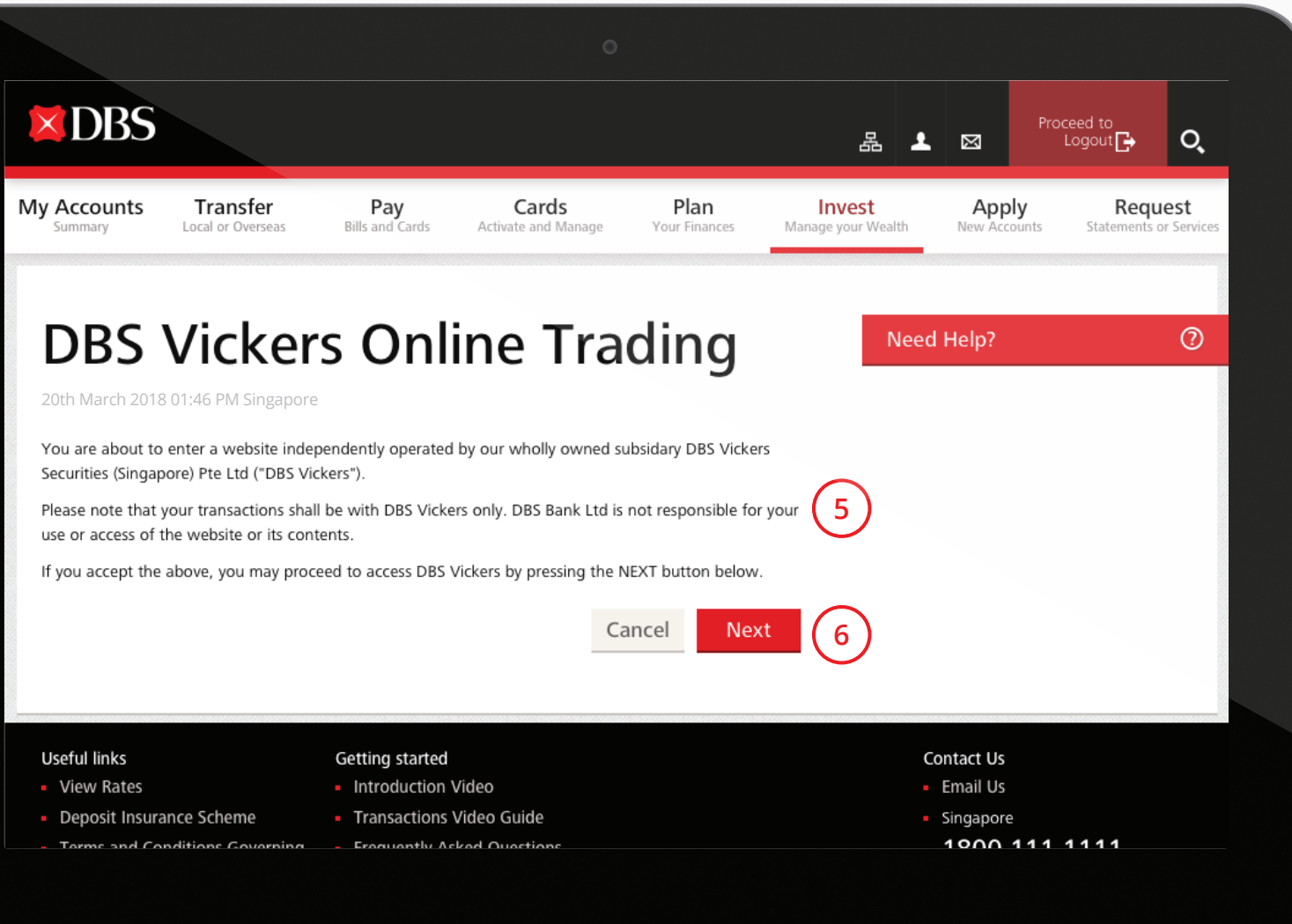
- 1 Log in to your DBS/POSB iBanking account.
- 2 Click on the Invest tab > DBS Vickers Online Trading.





- 3 Generate a One-Time Pin (OTP) using either your 2FA Secure Device or via SMS.
- 4 Enter the One-Time PIN (OTP) and click **Login**





5 Read the terms and conditions stated.

6 Click **Next** to acknowledge the terms and conditions.





Home

[Important Notices](#)

Account 8XXXXX7 **3** Multi Currency Account 120-XXXXXX-X

Buying Power	Available Balance View all
Buy Limit SGD 10,000.00	SGD 5,000.00
Sell Limit SGD 75.00	

Watchlist

My Watchlist Legend View All

Symbol	Cc	Last	Action	Stock Name	Mkt	Chg	% Chg	Bid	Ask	Vol	High	Low	Open	Rmk
D05	SGD	28.080	Buy Sell	DBS	SG	0.010	0.040	28.080	28.090	2,632,439	28.300	28.000	28.150	CD
BSL	SGD	1.140	Buy Sell	Raffles Medical	SG	-0.010	-0.870	1.140	1.150	1,223,400	1.160	1.140	1.150	
T39	SGD	2.550	Buy Sell	SPH	SG	0.060	2.410	2.540	2.550	8,891,500	2.570	2.490	2.500	CD

Prices for some markets may be delayed. Please check your [Market Data Entitlement](#).

2 Quick Stock Search & Trade

- 1 Main navigation bar.
- 2 Smart Search - quick access to stock information.
(refer to next slide for illustration of Smart Search function)
- 3 View Your Buying Power and DBS Multi-Currency Account balances here.



Home

[Important Notices](#)

Account 8XXXXX7		Multi Currency Account 120-XXXXXX-X	
Buying Power		Available Balance	View all
Buy Limit	SGD 10,000.00	SGD	5,000.00
Sell Limit	SGD 75.00		

Watchlist

My Watchlist

[Legend](#) [View All](#)

Symbol	Cc	Last	Action	Stock Name	Mkt	Chg	% Chg	Bid	Ask	Vol	High	Low	Open	Rmk
D05	SGD	28.080	Buy Sell	DBS	SG	0.010	0.040	28.080	28.090	2,632,439	28.300	28.000	28.150	CD
BSL	SGD	1.140	Buy Sell	Raffles Medical	SG	-0.010	-0.870	1.140	1.150	1,223,400	1.160	1.140	1.150	
T39	SGD	2.550	Buy Sell	SPH	SG	0.060	2.410	2.540	2.550	8,891,500	2.570	2.490	2.500	CD

1

Quick Stock Search & Trade

D05 DBS SG



Trade


2

3

Last	28.080	Chg	0.010	Bid	28.080	Bid Vol	6,600	High	28.300	Open	28.150	Lot	100	52High	29.710
Vol (Shr)	2,632,439	% Chg	0.040	Ask	28.090	Ask Vol	45,200	Low	28.000	Prev Cls	28.070	Turnover	74,036,118.630	52Low	18.650

4

[More Details](#)

- 1 Enter stock symbol / name and click on the correct symbol to bring up current market information about share counter.
- 2 Click on **Trade** to place trade.
- 3 Click on refresh symbol  to refresh stock data.
- 4 Click on [More Details](#) to access overview details of the stock.



Place Order

Stock Search

DBS		
DBS	POWERSHARES DB SILVER ETF	US
D05	DBS	SG
DBSDY	DBS GROUP HOLDINGS ADR REP 4 ORD	US
DBSXF	DEUTSCHE BANK EQY WARRANT	US
DBSHF	DB ST HELIER PHYSICAL RHODIUM ETC	US
DBSDF	DBS GROUP HLDG ORD	US
CBDW	DBS MB eCW170703@	SG

1

Trade Directly

Settlement Mode: Cash
 Settlement Currency: SGD
 Symbol:
 Quantity:
 Limit Order:
 Order Duration: Good for Today
 Price:

Cancel Preview Order

Account 8XXXXX7

Buying Power

Buy Limit SGD 10,000.00

Sell Limit SGD 75.00

Multi Currency Account 120-XXXXXX-X

Available Balance [View all](#)

SGD 5,000.00

Trade > Place Order

- 1 Search by entering company name or stock code and click on the correct option that is found in the search result.



DBS VICKERS SECURITIES

Sitemap My Profile Back to iBanking Logout

Home Trade Markets My Account IPO Resources

Place Order

Stock Search

D05 DBS SG

DBS
Symbol - D05 Market - SG

Details Intraday Chart Bid & Ask

Last	29.770	Vol	3,672,600
Bid	29.760	Ask	29.770
Bid Vol	17,500	Ask Vol	6,500
Chg	-0.020	% Chg	-0.070
Open	29.990	Prev Cls	29.790
High	29.990	Low	29.700
Lot	100	Turnover	109,642,244.400

Trade Directly

Settlement Mode: Cash
Settlement Currency: SGD (Traded)

Market: Singapore

Action: Buy Sell

Order Type: Limit Order

Order Duration: Good for Today

Price: SGD 29.760

Quantity (Lot Size: 100): 100

Account 8XXXXX7

Buying Power

Buy Limit: SGD 10,000.00

Sell Limit: SGD 75.00

Multi Currency Account 120-XXXXXX-X

Available Balance [View all](#)

SGD: 5,000.00

Cancel Preview Order

- 1 Chosen stock data will be populated. You can also view other data types by choosing other tabs.
- 2 Select your settlement mode in either Cash, Cash Upfront, CPF or SRS. If the chosen stock may be settled using SRS or CPFIS funds, the options will be available for selection under Settlement Mode. (Your trading account must be linked to your CPF/SRS account).
- 3 Select the markets that you wish to trade in. Markets offered include SG, US, CA, HK, UK, AU and JP.
- 4 Select your order type here. You may click on [Order Type](#) for more information.
- 5 Enter the quantity (in terms of unit share).





6 Select **Preview Order** to proceed.

Note: For Cash buy order, please ensure that there are sufficient funds in the traded currency in your DBS Multi-Currency Account (MCA) **on settlement date**. You can view your MCA balances from the right panel.

DBS VICKERS SECURITIES

Sitemap My Profile Back to iBanking Logout

Home Trade Markets My Account IPO Resources

Place Order

Stock Search

D05 DBS SG

DBS
Symbol - D05 Market - SG

Details Intraday Chart Bid & Ask

Last	29.770	Vol	3,672,600
Bid	29.760	Ask	29.770
Bid Vol	17,500	Ask Vol	6,500
Chg	-0.020	% Chg	-0.070
Open	29.990	Prev Cls	29.790
High	29.990	Low	29.700
Lot	100	Turnover	109,642,244.400

Trade Directly

Settlement Mode: Cash
Settlement Currency: SGD (Traded)

Stock Name: DBS
Market: Singapore
Symbol: D05

Action: Buy (selected) Sell

Order Type: Limit Order
Quantity (Lot Size: 100): 100

Order Duration: Good for Today
Price: SGD 29.760

Account 8XXXXX7

Buying Power

Buy Limit: SGD 10,000.00
Sell Limit: SGD 75.00

Multi Currency Account 120-XXXXXX-X

Available Balance: [View all](#)
SGD: 5,000.00

Cancel Preview Order **6**





The screenshot shows the 'Place Order' page on the DBS Vickers Securities website. The page is divided into several sections:

- Stock Search:** A search bar contains 'D05', 'DBS', and 'SG'. Below it, the selected stock 'DBS' is shown with its symbol 'D05' and market 'SG'. A table of market data is displayed below the search results.
- Trade Directly:** This section contains several dropdown menus and input fields:
 - Settlement Mode:** Set to 'Cash Upfront' (callout 2).
 - Settlement Currency:** Set to 'SGD (Traded)'.
 - Account:** Set to '8XXXXXX7'.
 - Stock Name:** Set to 'DBS'.
 - Market:** Set to 'Singapore' (callout 3).
 - Symbol:** Set to 'D05'.
 - Action:** Radio buttons for 'Buy' (selected) and 'Sell'.
 - Order Type:** Set to 'Limit Order' (callout 4).
 - Quantity (Lot Size:100):** Set to '100' (callout 5).
 - Order Duration:** Set to 'Good for Today'.
 - Price:** Set to 'SGD 29.760'.
- Right Panel:** Shows account information for 'Account 8XXXXXX7', including 'Buying Power', 'Buy Limit' (SGD 10,000.00), 'Sell Limit' (SGD 75.00), and 'Multi Currency Account 120-XXXXXX-X' with an 'Available Balance' of '5,000.00'.
- Buttons:** At the bottom right, there are 'Cancel' and 'Preview Order' buttons. The 'Preview Order' button is highlighted with a callout 6.

Market Data Table:

Last	29.770	Vol	3,672,600
Bid	29.760	Ask	29.770
Bid Vol	17,500	Ask Vol	6,500
Chg	-0.020	% Chg	-0.070
Open	29.990	Prev Cls	29.790
High	29.990	Low	29.700
Lot	100	Turnover	109,642,244.400

- 1 Chosen stock data will be populated. You can also view other data types by choosing other tabs.
- 2 Select Cash Upfront as your settlement mode.
- 3 Select the markets that you wish to trade in. Markets offered include SG, US, CA, HK, UK, AU and JP.
- 4 Select your order type here. You may click on [Order Type](#) for more information.
- 5 Enter the quantity (in terms of unit share).
- 6 Select [Preview Order](#) to proceed.

Note: For Cash Upfront buy order, please ensure that there are sufficient funds (contract value of the trade plus charges) in the traded currency in your MCA **before placing a trade**. You can view your MCA balances from the right panel.



DBS VICKERS SECURITIES Sitemap My Profile Back to iBanking Logout

Home **Trade** **Markets** **My Account** **IPO** **Resources**
Enquire at a glance Buy or Sell Stock News & Research Balances & Portfolios Online Private Placement Information and Forms

Order Preview 1

Transaction Details

Transaction Value	
Total Contract Value	SGD 2,976.00
Commission	SGD 10.00
Clearing Fee	SGD 0.97
SGX Trading Fee	SGD 0.22
GST	SGD 0.78
Total Commission & Fees	SGD 11.97
Indicative Total Proceed	SGD 2,987.97

Stock Details

Last	29.770	Vol	3,672,600
Bid	29.760	Ask	29.770
Bid Vol	17,500	Ask Vol	6,500
Chg	-0.020	% Chg	-0.070
Open	29.990	Prev Cls	29.790
High	29.990	Low	29.700
Lot	100	Turnover	109,642,244.400

Account 8XXXXX7

Action	Buy	Stock Name	DBS
Market	Singapore	Symbol	D05
Order Type	Limit Order	Quantity	100
Order Duration	Good for Today	Date	-
Price	SGD 29.760	Settlement Mode	Cash Upfront
Settlement Currency	SGD	Settlement Currency	SGD

Account 8XXXXX7

Buying Power	
Buy Limit	SGD 10,000.00
Sell Limit	SGD 75.00
Multi Currency Account	120-XXXXXX-X
Available Balance	View all
SGD	5,000.00

Cancel Amend Confirm Order 2

- 1 Order Preview page displays a summary of the order details.
- 2 Check and verify the details of the order and click on **Confirm Order** to submit. You may also **Amend** or **Cancel** the order.





Order Status

Auto Refresh On Off 8XXXXX7

Display status of orders
This page displays current orders. To check your past orders, please go to [Order History](#).

All Orders

Symbol	Stock Name/ Transaction ID	Market	Action	Quantity	Price	Settlement Mode	Filled Quantity	Filled Price	Outstanding Quantity	Status	Order Date/Time	More Action
D05	DBS 2018XXXXXXXXXXXX5	SG	Buy	100	SGD 29.7601	Cash Upfront	-		100	Pending	27/04/2018 07:12:00 PM	

Order details are moved to the History page after the market close.

The status of unfilled and expired orders for ASX, TSE and LSE is shown as Rejected after the market close.

Trade > Order Status

Order Status displays working orders or any orders submitted for an incoming trading day.

Expired or fully executed orders will be shown in the 'History' section of 'My Account' tab the next day.

Good till date orders will continue to appear in the Order Status page until orders are either fully executed or expired.

Orders may be cancelled or amended in the 'More Action' section.



Trade

All-in-one place to manage your trading

Watchlist **Top 20** Custom Portfolio Sectors Groups SGX A-Z

Legend

SGX Volume (Shr) Market Data Entitlement **2** Stream Prices On Off

DJIA: 24,033.36 389.17 NASDAQ: 6,941.28 71.16 TSX: 15,180.76 -32.69 STI: 3,392.62 -19.53 HSI: 30,126.36 -53.74
ASX 200: 5,745.500 -6.400 Nikkei 225: 21,260.60 -31.69 FTSE 100: 7,030.46 -26.15

Symbol	Stock Name	Action	Bid	Ask	Cc	Last	Chg	% Chg	Bid Vol	Bid	Ask	Ask Vol	Vol	High	Low	Open	Prev Cls	52H	52L
CRAW	HSI29800MBePW180427@	Buy Sell	0.132	0.132	SGD	0.132	-	-	505,000	0.131	0.132	500,000	104,661,800	0.138	0.117	0.126	0.132	0.215	0.069
CRYW	HSI31200MBeCW180530@	Buy Sell	0.144	0.145	SGD	0.144	-	-	500,000	0.144	0.145	300,000	103,149,600	0.158	0.140	0.151	-	0.245	0.005
CQWW	HSI28800MBePW180427@	Buy Sell	0.070	0.071	SGD	0.070	-0.003	-4.110	500,000	0.070	0.071	500,000	79,506,200	0.074	0.062	0.067	0.073	0.161	0.038
CQUW	HSI31600MBeCW180427@	Buy Sell	0.048	0.048	SGD	0.048	-0.007	-12.730	505,000	0.047	0.048	500,000	29,880,200	0.056	0.046	0.055	0.055	0.215	0.038
5LY	MarcoPolo Marine	Buy Sell	0.034	0.035	SGD	0.034	-	-	751,400	0.034	0.035	8,444,000	25,139,700	0.036	0.033	0.035	0.034	0.068	0.034
594	\$ CWX Global	Buy Sell	0.008	0.008	SGD	0.008	-	-	31,980,000	0.007	0.008	27,814,300	25,000,000	-	-	-	0.008	0.026	0.007
C8R	\$ Jiutian Chemical	Buy Sell	0.061	0.061	SGD	0.061	-0.003	-4.690	2,235,400	0.060	0.061	1,138,500	23,826,700	0.063	0.060	0.063	0.064	0.095	0.010
5GF	Nico Steel^	Buy Sell	0.003	0.003	SGD	0.003	0.001	50.000	1,500,000	0.002	0.003	64,385,900	23,710,100	0.003	0.002	0.002	0.002	0.014	0.001
NSBU	HPH Trust USD	Buy Sell	0.310	0.310	USD	0.310	0.015	5.080	6,070,200	0.305	0.310	6,444,300	22,675,200	0.310	0.290	0.295	0.295	0.485	0.285
5QT	\$ Charisma Energy	Buy Sell	0.003	0.004	SGD	0.003	-0.001	-25.000	16,184,400	0.003	0.004	24,836,700	19,835,600	0.003	0.003	0.003	0.004	0.010	0.003
A78	\$ LionGold	Buy Sell	0.001	0.002	SGD	0.001	-	-	9,673,200	0.001	0.002	390,523,300	12,406,900	0.002	0.001	0.001	0.001	0.003	0.001
CRZW	HSI29200MBePW180530@	Buy Sell	0.184	0.184	SGD	0.184	-	-	100,000	0.183	0.184	10,000	12,080,000	0.190	0.172	0.177	-	0.330	0.174
Z74	SingTel	Buy Sell	3.350	3.360	SGD	3.350	-0.030	-0.890	1,556,200	3.350	3.360	716,800	10,860,800	3.390	3.350	3.390	3.380	3.968	3.300
SFL	Falcon Energy	Buy Sell	0.039	0.040	SGD	0.039	0.003	8.330	172,400	0.039	0.040	913,300	10,437,200	0.041	0.037	0.037	0.036	0.128	0.030



Trade > Watchlist

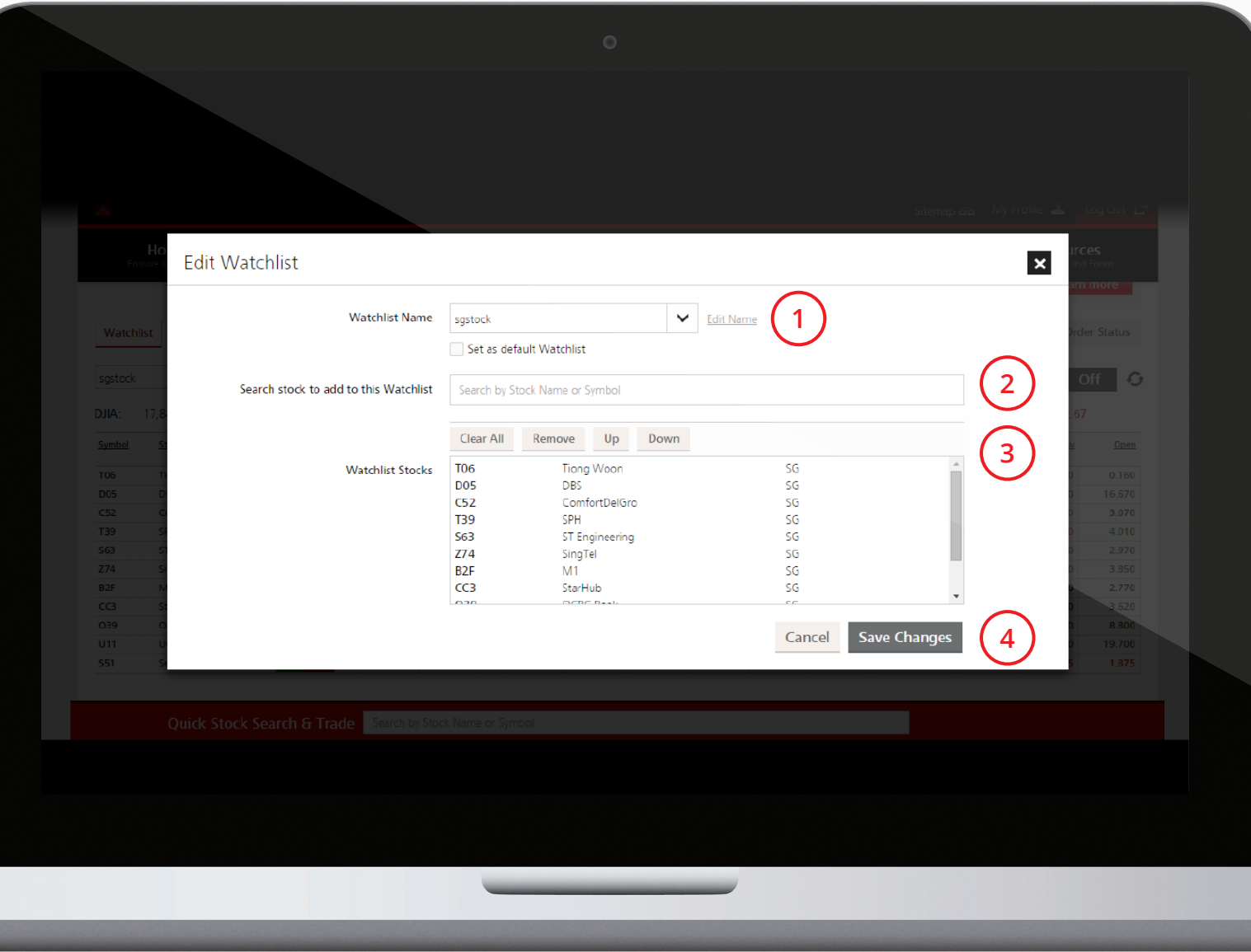
All-in-one place to manage your trading.

Save and edit up to 5 Watchlists. Maximum of 30 stocks per list, or choose to view by top 20, custom portfolio, sector, groups or SG stocks listing A-Z.

Customisation of fields for variables to monitor stock performance.

1 Move cursor to access smart functions or click on **Buy Sell** to place a trade.

2 Toggle for streaming.



- 1 Select Watchlist to edit, customise watchlist name.
- 2 Search for stock counters by company name or stock symbol.
- 3 Add or remove search results to/from the list.
- 4 Click on **Save Changes** to save Watchlist.





Advanced Market Data

D05 DBS SG 1 Buy Sell

Trade Distribution | Bid & Ask | Time & Sales

Last Done Price: 29.240 | Volume: 10,517,310
 Change: -1.370 | %Change: -4.480
 High: 29.300 | Low: 28.910

Price	Trades	Volume	Sold to Buyer	Bought from Seller	*Other
28.910	164	62,100	61,900	0	200
28.920	525	465,727	380,727	79,300	5,700
28.930	231	135,900	40,000	95,400	500
28.940	165	63,700	17,800	38,200	7,700
28.950	274	178,600	52,600	117,500	8,500
28.960	206	75,500	20,900	54,400	200
28.970	178	86,300	37,400	43,300	5,600

Others* : off-market transaction

S68 SGX SG 2 Buy Sell

Trade Distribution | Bid & Ask | Time & Sales

Last Done Price: 7.710 | Volume: 1,655,400
 Change: +0.010 | %Change: +0.130
 High: 7.750 | Low: 7.650

Bid Volume	Bid	Ask	Ask Volume
2800	7.710	7.720	56500
22900	7.700	7.730	74800
51200	7.690	7.740	179500
19800	7.680	7.750	190400
21700	7.670	7.760	126300
13500	7.660	7.770	33600
61000	7.650	7.780	47300

BSL Raffles Medical SG Buy Sell

Trade Distribution | Bid & Ask | **Time & Sales**

Last Done Price: 1.140 | Volume: 2,657,900
 Change: -0.020 | %Change: -1.720
 High: 1.150 | Low: 1.130

■ Trade with transaction value more than \$100K

Time	Price	Trade Size	Action
------	-------	------------	--------

T39 SPH SG Buy Sell

Trade Distribution | Bid & Ask | **Time & Sales**

Last Done Price: 2.700 | Volume: 4,056,800
 Change: - | %Change: -
 High: 2.710 | Low: 2.670

■ Trade with transaction value more than \$100K

Time	Price	Trade Size	Action
------	-------	------------	--------

Trade > Advanced Market Data

Monitor four stocks at the same time on the same page. Allows dynamic data feeds and viewing of Trade Distribution, Bid & Ask, as well as Time & Sales data feeds.

- 1 Access smart functions and place trades. Buy Sell
- 2 Click on Save As Default to save template as a default template for easy future access.



Advanced Market Data

Load Default
Save As Default

1 D05 SG

Trade Distribution | Bid & Ask | Time & Sales

Last Done Price: 29.240
Change: -1.370
High: 29.300

Volume: 10,517,310
%Change: -4.480
Low: 28.910

Price	Trades	Volume	Sold to Buyer	Bought from Seller	*Other
28.910	164	62,100	61,900	0	200
28.920	525	465,727	380,727	79,300	5,700
28.930	231	135,900	40,000	95,400	500
28.940	165	63,700	17,800	38,200	7,700
28.950	274	178,600	52,600	117,500	8,500
28.960	206	75,500	20,900	54,400	200
28.970	178	86,300	37,400	43,300	5,600
28.980	204	175,000	100,000	52,100	12,600

Others* : off-market transaction

2 S68 SGX SG

Trade Distribution | Bid & Ask | Time & Sales

Last Done Price: 7.710
Change: +0.010
High: 7.750

Volume: 1,655,400
%Change: +0.130
Low: 7.650

Bid Volume	Bid	Ask	Ask Volume
2800	7.710	7.720	56500
22900	7.700	7.730	74800
51200	7.690	7.740	179500
19800	7.680	7.750	190400
21700	7.670	7.760	126300
13500	7.660	7.770	33600
61000	7.650	7.780	47300
25000	7.640	7.790	14000

3 BSL Raffles Medical SG

Trade Distribution | Bid & Ask | Time & Sales

Last Done Price: 1.140
Change: -0.020
High: 1.150

Volume: 2,657,900
%Change: -1.720
Low: 1.130

Trade with transaction value more than \$100K

Time	Price	Trade Size	Action
------	-------	------------	--------

T39 SPH SG

Trade Distribution | Bid & Ask | Time & Sales

Last Done Price: 2.700
Change: -
High: 2.710

Volume: 4,056,800
%Change: -
Low: 2.670

Trade with transaction value more than \$100K

Time	Price	Trade Size	Action
------	-------	------------	--------

1 Advanced Market Data > Trade Distribution

Trade Distribution shows the current trading day's trade distribution. It displays a stock's transaction and is sorted by transacted price.

*Other section refers to a trade that is not executed at the exchange floor and could be in the form of a married trade or Equity Swap between corporations.

2 Advanced Market Data > Bid & Ask

Bid & Ask displays the next price queue after the current Bid & Ask price.

3 Advanced Market Data > Time & Sales

Time & Sales displays the transaction's execution point over the spread of the trade day.





Transaction Screener

2018-04-26 SGX Transaction Amt > \$1M Stock ALL Price ALL **1**

Transaction

Update Time	Symbol	Stock Name	Action	Price	Trade size	Amount	Bid Ask
16:49:13	Z74	SingTel	Buy Sell	3.440	300,000	1,032,000	Bought from Seller
16:45:49	BN4	Keppel Corp	Buy Sell	8.080	162,600	1,313,808	Bought from Seller
15:51:52	U96	Sembcorp Ind	Buy Sell	3.060	1,228,700	3,759,822	Bought from Seller
15:44:53	V03	Venture	Buy Sell	21.980	148,600	3,266,228	Sold to Buyer
15:15:02	Z74	SingTel	Buy Sell	3.430	300,000	1,029,000	Sold to Buyer
15:01:04	Z74	SingTel	Buy Sell	3.440	319,400	1,098,736	Bought from Seller
14:58:34	SWE	\$ Moya Asia	Buy Sell	0.100	286,083,677	28,608,367	Bought from Seller
14:53:20	Z74	SingTel	Buy Sell	3.430	1,000,000	3,430,000	Bought from Seller
14:18:10	Z74	SingTel	Buy Sell	3.430	860,000	2,949,800	Bought from Seller
14:16:34	Z74	SingTel	Buy Sell	3.430	750,000	2,572,500	Sold to Buyer
14:14:22	U11	UOB	Buy Sell	29.400	100,000	2,940,000	Bought from Seller
13:50:51	J69U	Fraser's Cpt Tr	Buy Sell	2.220	457,000	1,014,540	Bought from Seller
11:22:24	CJLU	NetLink NBN Tr	Buy Sell	0.810	2,000,000	1,620,000	Sold to Buyer
10:58:26	C6L	SIA	Buy Sell	10.850	103,900	1,127,315	Bought from Seller
10:40:40	U11	UOB	Buy Sell	29.410	703,100	20,678,171	Sold to Buyer
10:37:39	D05	DBS	Buy Sell	29.900	47,000	1,405,300	Sold to Buyer
09:44:45	G13	Genting Sing	Buy Sell	1.160	1,500,000	1,739,999	Bought from Seller
09:20:11	U11	UOB	Buy Sell	29.410	50,000	1,470,500	Sold to Buyer
09:01:03	A17U	Ascendas Reit	Buy Sell	2.680	424,600	1,137,928	Bought from Seller
08:34:04	J36	JMH USD	Buy Sell	61.510	25,600	1,574,656	*Others
08:31:22	S63	ST Engineering	Buy Sell	3.460	293,700	1,016,202	*Others
08:31:06	BN4	Keppel Corp	Buy Sell	8.080	137,000	1,106,960	*Others
08:31:06	O39	OCBC Bank	Buy Sell	13.690	115,900	1,586,671	*Others
08:31:05	C31	CapitaLand	Buy Sell	3.750	1,018,000	3,817,500	*Others

Summary

Symbol	Stock Name	Txns	Bought	Sold	*Others
Z74	SingTel	7	4	3	0
U11	UOB	4	1	2	1
O39	OCBC Bank	3	0	0	3
BN4	Keppel Corp	2	1	0	1
V03	Venture	2	0	1	1
SWE	\$ Moya Asia	1	1	0	0
A17U	Ascendas Reit	1	1	0	0
C31	CapitaLand	1	0	0	1
C6L	SIA	1	1	0	0
CJLU	NetLink NBN Tr	1	0	1	0
D05	DBS	1	0	1	0
G13	Genting Sing	1	1	0	0
J36	JMH USD	1	0	0	1
J69U	Fraser's Cpt Tr	1	1	0	0
S63	ST Engineering	1	0	0	1
U96	Sembcorp Ind	1	1	0	0

Others* : off-market transaction

Trade > Transaction Screener

- 1 Track and locate trade information of certain sizes. You may filter transactions that fall within the specified range in terms of contract value or price.

Note: Access to "Transaction Screener" for Singapore market is at DBS Vickers' absolute discretion taking into account your monthly transactions.





Commission Calculator

8XXXXX7

Singapore Stocks Hong Kong Stocks U.S. Stocks Canada Stocks U.K. Stocks Australia Stocks Japan Stocks

To calculate the estimated commission for an online trade, please enter the stock quantity and trading price and click on 'Calculate'.

Transaction Buy Sell

Stock Quantity (Shares)

Trading Price

Trade Currency SGD

Reset Calculate

Trade > Commission Calculator

Calculates the estimated brokerage commission charges for your trades.



Singapore News

All Sectors Currencies Debt Yields Interest Rates Energies Metals Sports

Date	Description	Related to
04/06/2018 01:03 PM	SE Asia Stocks-Most gain; Singapore, Indonesia up nearly 1 percent	Watchlist & Portfolio
04/06/2018 12:51 PM	UPDATE 3-N.Korea shakes up top military brass ahead of Trump summit - U....	
04/06/2018 12:50 PM	AIMS PROPERTY SECURITIES FUND (Foreign exchange rate for March 2018 dist...	
04/06/2018 12:43 PM	Anti-nuke Nobel winner ICAN offer to pay Trump-Kim summit	
04/06/2018 12:37 PM	Asia Crude Oil Tenders Summary-MRPL seeks Aug sweet crude	
04/06/2018 12:29 PM	TABLE-Indonesia's Lampung cocoa exports at 609.6 tonnes in May	
04/06/2018 11:39 AM	PDF 1: PETRON CORPORATION (Corporate Disclosure)	
04/06/2018 11:39 AM	PDF 1: PETRON CORPORATION (Corporate	

Markets > News

Access news feed across the markets.

- 1 Click on headlines to access the content of the news.
- 2 News that are directly/ indirectly related to stocks in your Watchlist/Custom Portfolio will be indicated next to the news.




Singapore Latest Insights


Results 1-5 of about 5933 for Insights and Analysis

Search Latest Insights Search


Search Results

- 

US unveils tariff list; trade skirmish and choppiness in equities to continue
04/04/2018
Expect tit-for-tat action by the Chinese after the embassy in the US said it "strongly condemns and firmly opposes" the tariffs. For more, check out today's Singapore Wired Daily.

1 [More Details >](#)
- 

US stocks surge
04/04/2018
On speculation that Trump's policies will not disrupt global trade, economic growth

[More Details >](#)
- 

Pound bulls set for April boost
04/04/2018
Sterling appreciated vs. the dollar every April during the last 13 years

Markets > Insights

Insights on economic and strategic views straight from DBS Group Research.

- Click on [More Details >](#) to access the full report.



Reports

1 Select Category

Date	Description
02/12/2015 02:02:00 PM	Asian Pay Television Trust - Slow network expansion
02/12/2015 11:11:00 AM	Wired Daily - Today's Focus
02/12/2015 11:10:00 AM	Sembcorp Marine - Slipping into the red
02/12/2015 11:08:00 AM	Hong Kong Daily Focus - Daily Focus
02/12/2015 11:06:00 AM	Hong Kong Regional Morning Pack - Regional Morning Pack
01/12/2015 11:58:00 AM	Hong Kong Daily Focus - Daily Focus
01/12/2015 11:56:00 AM	Hong Kong MTR Corporation - In right direction
01/12/2015 11:51:00 AM	Hong Kong Monthly market pulse - Improved risk-reward after Nov
01/12/2015 11:46:00 AM	Midas Holdings - Recovery underway
01/12/2015 11:43:00 AM	Hong Kong Regional Morning Pack - REGIONAL
01/12/2015 11:41:00 AM	Wired Daily - Today's Focus
30/11/2015 05:11:00 PM	Hong Kong HK Property - Central office on the rebound

Markets > Reports

The Reports tab gives you access to recommendation reports from DBS Group Research.

- 1 Select your area of focus.





Stock Screener

1

Quick Stock Screener Ready Strategies My Strategies

Get up to 50 stocks based on 1 screening criterion

Select Exchange SGX

Select Sector or Group (Optional) Select Sector or Group

Select Value Select Display Order

Select Condition Fundamental/Technical Criteria

Get Results

Markets > Stock Screener

- 1 Filter and pick stocks based on specified criteria. Choose from sets of ready strategies or create your own strategies for stock picking.





Stock Screener Results

Quick Stock Screener Ready Strategies My Strategies

Quick Stock Screener
Exchange: SGX Sector: Exchange Traded Funds
Bvps - Highest - [Ratios] Book Value Per Share

Export To Excel Edit Strategy Save Strategy

Symbol	Stock Name	Action	Sector	SW	CCY	Prev Cls	Bvps	Report Year	Rpt Ccy
S27	SPDR S&P500 US\$@	Buy Sell	Financial Services		USD	260.000	172.205	2012	USD
D07	SPDR DJIA US\$@	Buy Sell	Financial Services		USD	240.210	139.794	2011	USD
O87	GLD US\$	Buy Sell	Gold Mines		USD	126.820	92.492	2012	USD

Note Find out more about

"@" symbol at the end of the security name means it is a Specified Investment Product (SIP).
"SW" - means there is/are Structured Warrants associated with the security.

Remarks

1 Move cursor to access smart functions or click on Buy Sell to place a trade.

2 Click on Export To Excel to export your strategies.

3 Edit your strategies by clicking on Edit Strategy. You can save up to 5 strategies.





Stock Search

1

dbs		
D05	DBS	SG
ANBW	DBS MB eCW160601@	SG
BEFW	DBS MB eCW160111@	SG
BEGW	DBS MB ePW160111@	SG
BFLW	DBS MB eCW160201@	SG
BFMW	DBS MB ePW160201@	SG
BGRW	DBS VT eCW160201@	SG

Markets > Stock Search

- 1 Enter Stock Name or Symbol to display the fundamental data of the company.



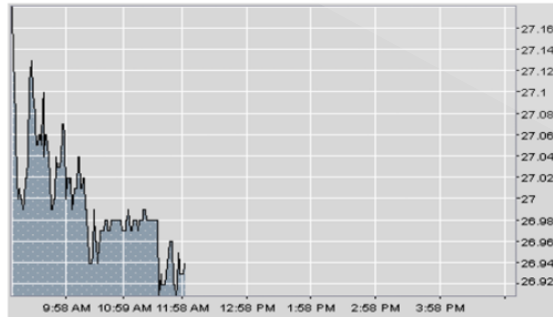


D05 (SGX) DBS + 1

DBS D05 (SGX)

Charting

Last: 26.940	Vol (Shr): 2,170,062
Chg: -0.240	% Chg: -0.880
Bid: 26.930	Ask: 26.930
Bid Volume: 12,900	Ask Volume: 9,200
High: 27.210	Low: 26.900
Open: 27.210	Prev Cls: 27.180
52H: 29.710	52L: 18.650



- Buy
- Sell
- Add to watchlist
- Compare
- Print

Show advanced market data

1 Click to add multiple stocks for quick toggling.





Stock Comparer

Allows you to compare the subject stock in different ways

Within The Same Sector With Other Stocks In Your Watchlist With Four Other Stocks

1 Stock Name

Select Exchange

Compare

Markets > Stock Comparer

1 Compare specified stocks against each other's fundamental / technical data.

Able to compare stocks in the same sector, watchlist or 4 other counters of your choice.



Stock Comparer - Results

Within The Same Sector With Other Stocks In Your Watchlist With Four Other Stocks

1 Add/Remove Comparison Fields Export To Excel

Symbol	Stock Name	Action	Sector	SW	Trd Ccy	Prev Cls	DivYld	Pe	Rsi14d	Report Year
I49	IFS Capital	Buy Sell	Services	-	SGD	0.265	1.132	50.000	36.082	2017
O39	OCBC Bank	Buy Sell	Services	SW	SGD	12.700	2.913	13.026	41.828	2017
U11	UOB	Buy Sell	Banking Services	SW	SGD	26.960	2.967	13.480	40.689	2017
T61	ValueMax	Buy Sell	Banking Services	-	SGD	0.295	3.661	8.240	53.094	2017
D05	DBS	Buy Sell	Banking Services	SW	SGD	27.180	3.422	16.112	42.805	2017
S41	Hong Leong Fin	Buy Sell	Banking Services	-	SGD	2.710	4.797	14.063	53.902	2017
S23	Spura Finance	Buy Sell	Banking Services	-	SGD	1.020	1.961	33.010	47.334	2017
5QY	S Net Pacific Fin	Buy Sell	Banking Services	-	SGD	0.041	1.664	16.868	53.694	2017
S35	Sing Inv & Fin	Buy Sell	Banking Services	-	SGD	1.570	4.459	10.904	51.082	2017

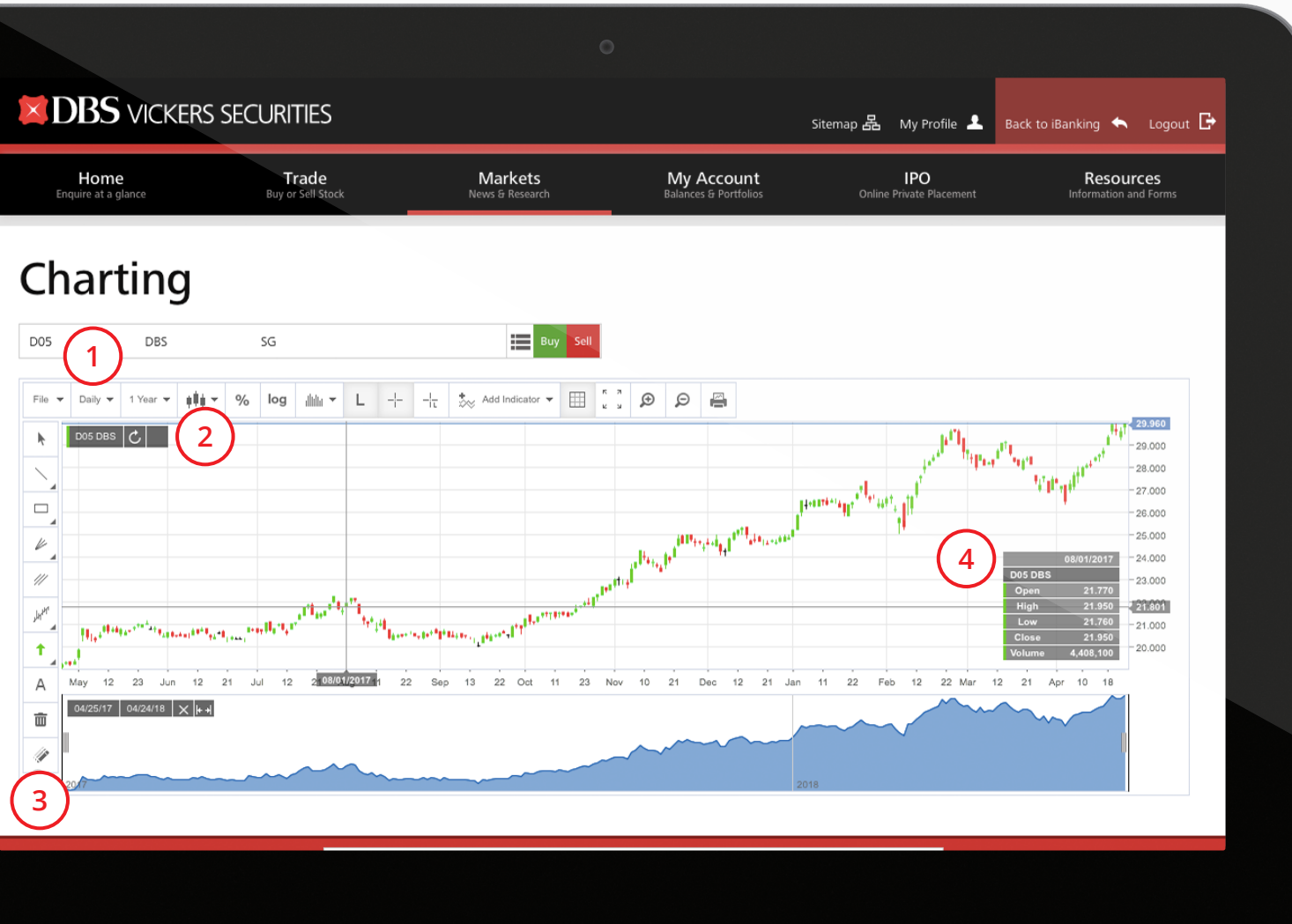
Note

"@" symbol at the end of the security name means it is a Specified Investment Product (SIP).
"SW" - means there is/are Structured Warrants associated with the security.

Remark

SUS = Trading Suspension, TH = Trading Halt, PL = Pending Listing, WI = When Issue, BI = Buy In Only, SDL = Delisted, CB = Cum Bonus, XB = Ex Bonus, CD = Cum Dividend, XD = Ex Dividend, CI = Cum Interest, XI = Ex Interest, CR = Cum Rights, XR = Ex Rights, CE

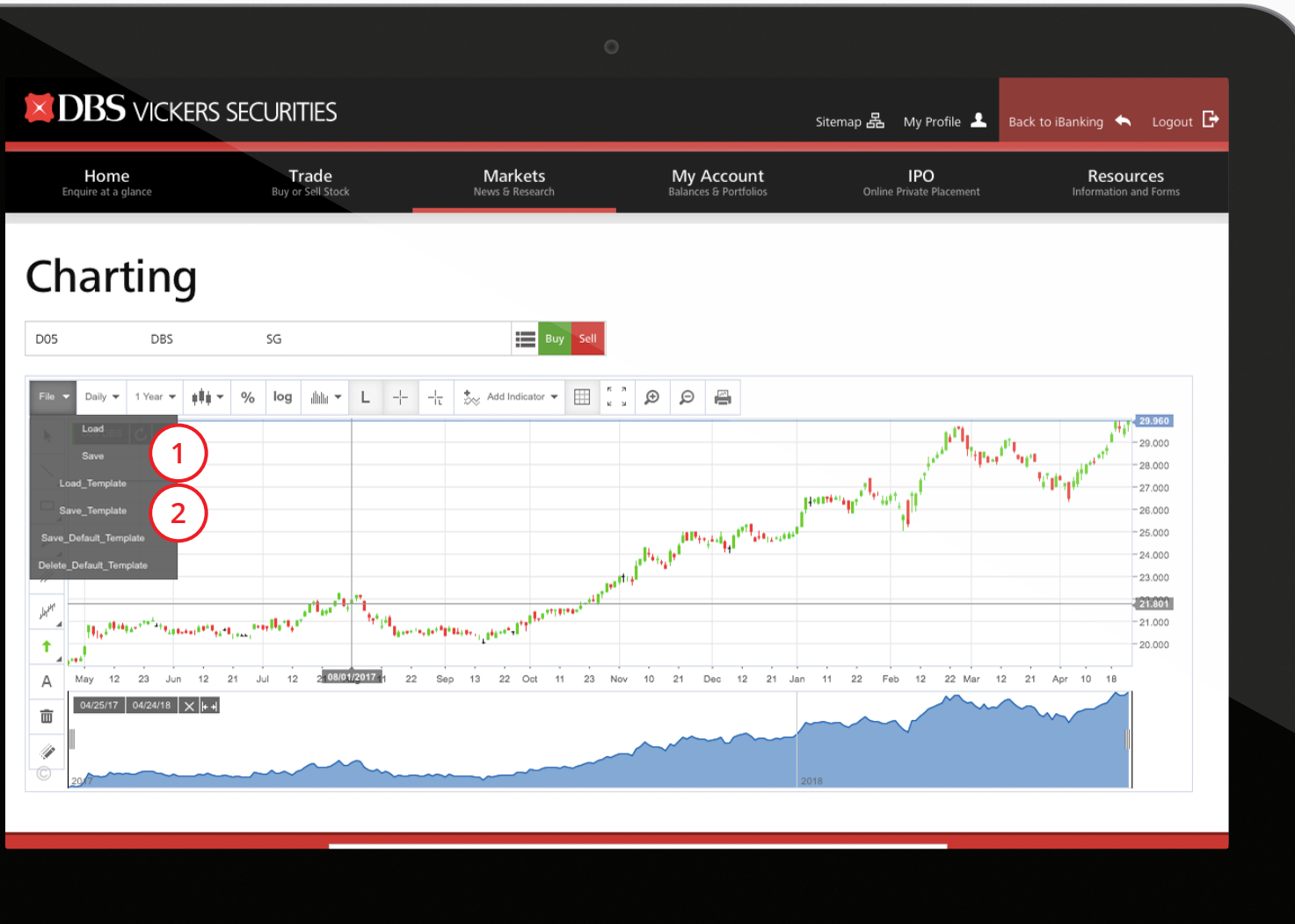
- 1 Gives you the flexibility to Add/Remove Comparison Fields by selecting from a list of fundamental/technical criteria.
- 2 Move cursor to access smart functions or click on Buy Sell place a trade.



Markets > Charting

- 1 Able to display daily, weekly or monthly charts for the past 5 years.
- 2 View chart options for customisation such as colour, chart styles etc.
- 3 Tools to add indicators / draw lines on chart. Edit the template to add up to 5 indicators. Choose between Line, Bar or Candlestick chart styles.
- 4 To zoom into a particular period, click and hold along that area of the chart.





- 1 Save Chart – Save any indicators / settings / drawings applied to the chart. Limited to 5 charts.
- 2 Save Template – Save only the indicator settings applied to the chart. Limited to 5 templates.





Singapore Market



1

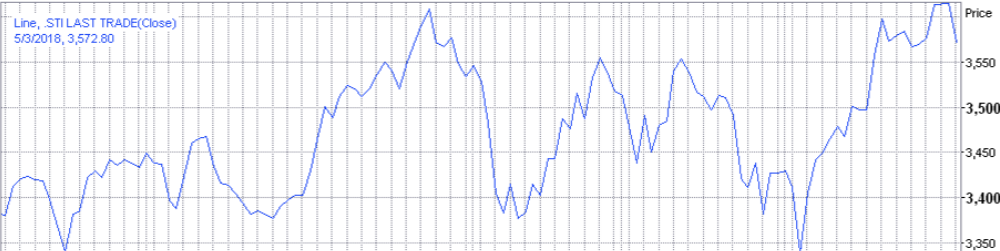
Check out how the markets are doing. Follow our research, read the news, and monitor the active stocks.

All 2 Sectors Currencies Debt Yields Interest Rates Energies Metals Sports

Overview

STRAITS TIMES 3,573.03 -42.25, -1.17%	FT ST CHINA 224.34 -1.56, -0.69%	FT ST ALL SHARE 858.44 -9.44, -1.09%	SECTOR INDICES
--	---	---	-----------------------

Daily .STI [Line]



Market Digest

Gainers 129	Gaining Volume 893,504,450
Losers 280	Losing Volume 954,573,473
Unchanged 144	Unchanged Volume 224,064,700
Total Traded 553	Total Volume Traded 2,072,142,623
New Highs	New Lows

Markets > Market Overview

View all the latest insights, research reports and stock recommendations from DBS Group Research across different markets at a glance.

- 1 Select the market from the drop down list.
- 2 Click on the blocks to access across different categories.





Balances

8XXXXX7

Consolidated view of the cash and holdings in your account

Cash

Currency	SGD	HKD	USD	CAD	GBP	EUR	AUD	JPY	Estimated Total (SGD)
Beginning Balance	0.00	0.00	0.00	0.00	0.00	0.00	0.00	0.00	0.00
Unsettled Buy Contracts	(2,984.97)	0.00	0.00	0.00	0.00	0.00	0.00	0.00	(2,984.97)
Unsettled Sell Contracts	0.00	0.00	0.00	0.00	0.00	0.00	0.00	0.00	0.00
Cash On Hold	0.00	0.00	0.00	0.00	0.00	0.00	0.00	0.00	0.00
Book Balance	(2,984.97)	0.00	0.00	0.00	0.00	0.00	0.00	0.00	(2,984.97)
Available for Withdrawal	(2,984.97)	0.00	0.00	0.00	0.00	0.00	0.00	0.00	(2,984.97)

Stock

Singapore Hong Kong United States Canada Shanghai B Shenzhen B Australia London Japan Estimated Total

My Account > Balances

Balances page displays a current view of fund balances and holdings of an account.

- 1 You may view your unsettled Buy or Sell trades here.

Note: Once your order has been filled, the amount will be debited from or credited to your MCA on settlement date. You can view your MCA balances either from the Home tab or iBanking.

Fixed income (foreign market) and Unit Trust are no longer available online.



Holdings

8XXXXX7

Consolidated view of the holdings in your account

Holdings Fundamentals

Stock

Symbol	Instrument Name	Market	Quantity Net	Quantity Unsettled	Currency	Market Price	Net Mkt Value	Action
D05	DBS	Singapore	100.00	0.00	SGD	29.7600	2,976.00	Buy Sell
							Total Net Mkt Value	
Total (SGD)							2,976.00	

Singapore Account Holders
Please note that if you have purchased Singapore shares, these will be released to your CDP/CPF/SRS account when the trade is settled and will not be reflected here. Kindly refer to your latest CDP/CPF/SRS statement for actual shareholding details. If in doubt, please call CDP at 65 (6535 7511) or your CPF/SRS custodian agent

United Kingdom Stock
If Market Price is in GBX, Net Mkt Value will be based on GBP.

Net Mkt Value of stock listed in some markets may be delayed. Please check your [Market Data Entitlement](#).

My Account > Holdings

Display holdings of all markets: SG, HK, US, CA, UK, AU and JP

SG holdings will only be shown during pre-settled status. Once trade has been settled, SG holdings will disappear as they will be held in your Central Depository (CDP) account.



DBS VICKERS SECURITIES Sitemap My Profile Back to iBanking Logout

Home Trade Markets My Account IPO Resources

Outstanding Contracts

Displays details of trades awaiting settlement

8XXXXX7

Payments (Unsettled Buy Contracts)

Add to Portfolio	Reference No	SGX Contract No	Order Date	Trade Date	Settlement Date	Settlement Mode	Action	Symbol	Stock Name	Market	Quantity	Transaction Price	Settlement Amc
<input type="checkbox"/>	DBSVS-2018-0636189	011992675	26/04/2018	26/04/2018	02/05/2018	CUMCA	Buy	D05	DBS	SG	100	SGD 29.730	SGD 2,984.970

Select Portfolio: Portfolio 1 Add

Estimated Currency Total (SGD) 2,984.970

Receipts (Unsettled Sell Contracts)

There is no sell transaction to display.

Add to Portfolio	Reference No	SGX Contract No	Order Date	Trade Date	Settlement Date	Settlement Mode	Action	Symbol	Stock Name	Market	Quantity	Transaction Price	Proceeds	Last
------------------	--------------	-----------------	------------	------------	-----------------	-----------------	--------	--------	------------	--------	----------	-------------------	----------	------

My Account > Outstanding Contracts

Display outstanding contracts for all markets.

Once your trade has been filled, it will be reflected under Outstanding Contracts until the trade has been settled.

Note: The amount will be debited from or credited to your MCA on settlement date. You can view your MCA balances either from the Home tab or iBanking.

- 1 Add a transaction to Custom Portfolio by checking the box and selecting the portfolio to add to.





DBS VICKERS SECURITIES

Sitemap My Profile Back to iBanking Logout

Home Trade Markets My Account IPO Resources

Custom Portfolios

Easy monitoring of portfolio performance with market prices

Performance Intraday Fundamentals

Portfolio 1

Export To Excel Edit Portfolio

DJIA:	24,448.69	-14.25	NASDAQ:	7,128.60	-17.53	TSX:	15,552.06	+67.74	STI:	3,572.55	-6.99	HSI:	30,396.14	+141.74
ASX 200:	5,897.70	+11.70	Nikkei 225:	22,203.58	+115.54	FTSE 100:	7,398.87	+30.70						

Symbol	Stock Name	Action	Mkt	Qty	Avg Price	Original Value	Last	Mkt Value	Profit/Loss in SGD	Profit/Loss %	% of Portfolio
BSL	Raffles Medical	Buy Sell	SG	100	2.6900	269.000	SGD 1.160	116.000	-153.000	-56.88	3.01
D05	DBS	Buy Sell	SG	100	2.6900	269.000	SGD 29.780	2,978.000	2,709.000	1,007.06	77.19
S68	SGX	Buy Sell	SG	100	2.6900	269.000	SGD 7.640	764.000	495.000	184.01	19.80
Total in SGD								3,858.000	3,051.000	378.07	100.00

Note

Prices for some markets may be delayed. Please check your [Market Data Entitlement](#). DJIA and indices relating to LSE, ASX and TSE are delayed by 15 to 20 minutes.

↑ ↓ indicate direction change from the previous trade price.
 "@ " symbol at the end of the security name means it is a Specified Investment Product (SIP).
 "SW" - means there is/are Structured Warrants associated with the security.

Stock Code/Symbol Warning

Stock code and Symbols may be changed or updated by stock exchanges from time to time. There are potential trading risks associated with such changes, as there may be time lapses between the time of the receipt of updated information by feed vendors and the time such

My Account > Custom Portfolio

- 1 Create up to 5 portfolios to monitor stock performance.
- 2 View portfolio from various dimensions, such as intra-day market data, performance or fundamental data of the company.
- 3 Click on to edit. (refer to next slide for editing of portfolio)





DBS VICKERS SECURITIES

Sitemap My Profile Back to iBanking Logout

Home Trade Markets My Account IPO Resources

Edit Custom Portfolio

Portfolio 1

Edit Portfolio Name: Portfolio 1

Set as default Portfolio

Search stock to modify this Portfolio: Search by stockname or symbol

Amend Existing Entries

Stock Name	Symbol	Exchange		Quantity	Average Price	Last Update (dd/mm/yyyy)	Delete [?]
Raffles Medical	BSL	SG	History	100	2.6900	24/04/2018	<input type="checkbox"/>
DBS	D05	SG	History	100	2.6900	24/04/2018	<input type="checkbox"/>
SGX	S68	SG	History	100	2.6900	24/04/2018	<input type="checkbox"/>

Cancel Save Changes

- 1 Choose the portfolio that you wish to edit.
- 2 Add a new stock by entering the stock name/ symbol. Include details such as the price done and quantity during the addition.
- 3 Check on the box to delete an entry.
- 4 Click **Save Changes** for the edits to take effect.





History

Review your account activity and past orders

Account Activity Order History

From Date 20/4/2018 Search Last 7 Days Last 30 Days Last 60 Days Last 90 Days Export to Excel

Currency - SGD

Date	Symbol	Description	Market	Quantity	Price	Credit/(Debit)	Balance	Settlement Date
20/04/2018		Beginning Balance						
26/04/2018	D05	Client Direct Buy	SG	100	29.730 (SGD)	-2984.97	-2984.97	02/05/2018

My Account > History

- 1 View up to the last 12 months of your Account Activity by specifying the period. (Useful for tracking dividend payments)
- 2 View past orders, up to the last 12 months, from the Order History tab. (E.g. executed orders, expired orders, etc)



eStatements

Need Help ?

Daily

January 2018						
Sun	Mon	Tue	Wed	Thu	Fri	Sat
31	1	2	3	4	5	6
7	8	9	10	11	12	13
14	15	16	17	18	19	20
21	22	23	24	25	26	27
28	29	30	31	1	2	3
4	5	6	7	8	9	10

February 2018						
Sun	Mon	Tue	Wed	Thu	Fri	Sat
28	29	30	31	1	2	3
4	5	6	7	8	9	10
11	12	13	14	15	16	17
18	19	20	21	22	23	24
25	26	27	28	1	2	3
4	5	6	7	8	9	10

March 2018						
Sun	Mon	Tue	Wed	Thu	Fri	Sat
25	26	27	28	1	2	3
4	5	6	7	8	9	10
11	12	13	14	15	16	17
18	19	20	21	22	23	24
25	26	27	28	29	30	31
1	2	3	4	5	6	7

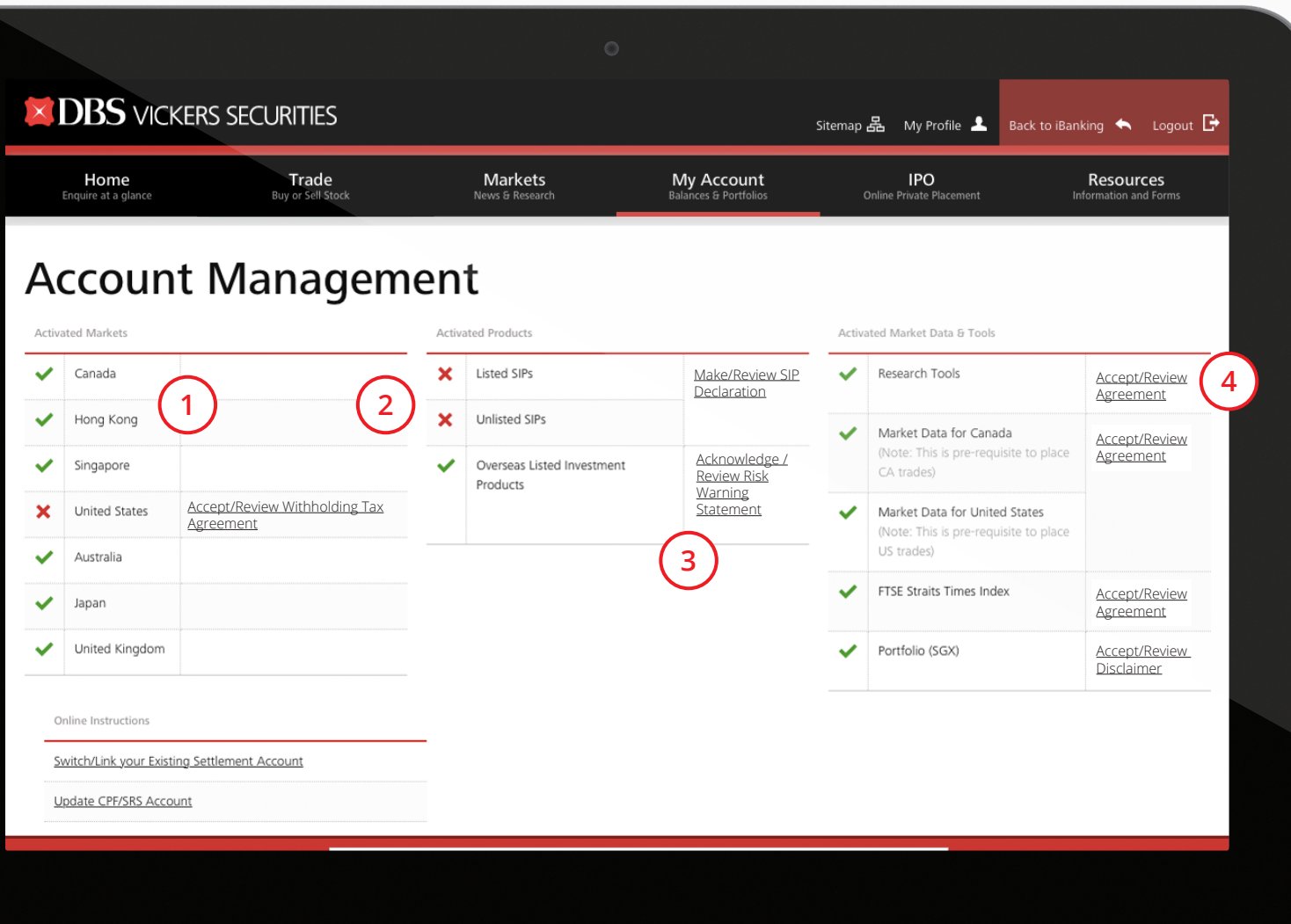
April 2018						
Sun	Mon	Tue	Wed	Thu	Fri	Sat
25	26	27	28	29	30	31
1	2	3	4	5	6	7
8	9	10	11	12	13	14
15	16	17	18	19	20	21
22	23	24	25	26	27	28
29	30	1	2	3	4	5

Monthly

- October 2017
- November 2017
- December 2017
- January 2018
- February 2018
- March 2018

My Account > eStatements

Through eStatements, you may view your daily statements for the past 90 days as well as your monthly statements for the past 6 months.



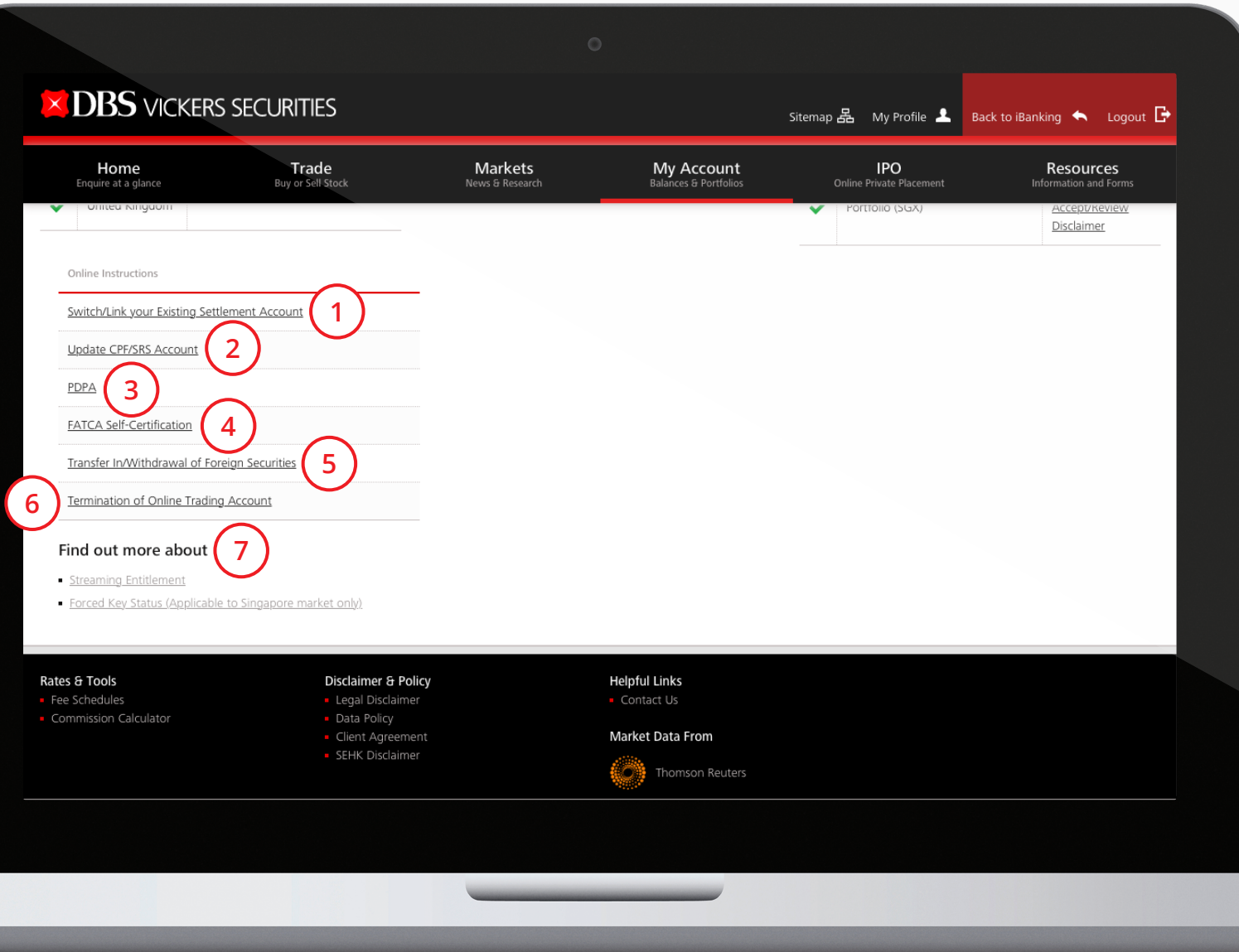
My Account >
Account Management

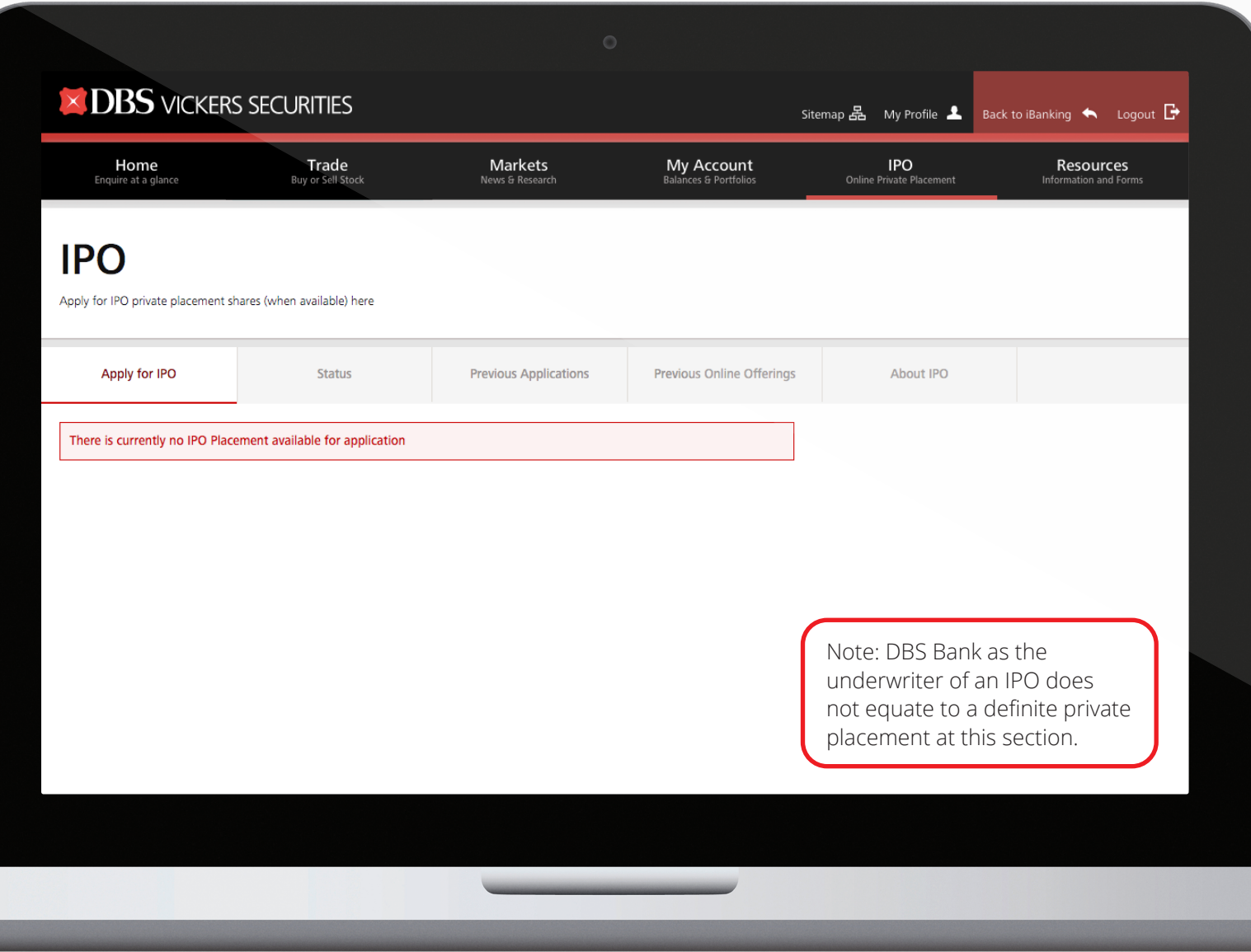
- 1 Markets that are available for trading.
- 2 Declaration in Specified Investment Products (SIP) enables you to trade in more complex financial products.
- 3 Risk warning statement highlights the key risks involved when trading in Overseas Listed Investment Products. Acknowledge this section to enable you to trade in foreign markets.
- 4 Review and accept the agreements in order to use the market data and tools in the platform.



My Account > Account Management

- 1 Switch and update your MCA for settlement.
- 2 Link your CPF / SRS account to your DBS Vickers online trading account.
- 3 Update your PDPA status with DBS Vickers.
- 4 Update your FATCA Self-Certification.
- 5 Perform transfer or withdrawal of foreign securities.
- 6 Terminate your trading account.
- 7 Check your Market Data entitlement.





IPO > Overview

Application of private placement for DBS Vickers online customers.

Advance announcements will be made to notify the period that an account holder may log in and submit their interest for subscription of a Private Placement.

Options under IPO:

- ▶ Apply for IPO
- ▶ Status
- ▶ Previous Applications
- ▶ Previous Online Offerings
- ▶ Application Terms & Conditions
- ▶ General Terms & Conditions
- ▶ FAQ
- ▶ IPO Overview





Resources

- Types of Accounts
- Fee Schedules
- Investment Products
- Important Notices
- Forms
- Events and Seminars
- FAQ & Glossary

This is where you may find general information.
More relevant items in this area are:

- Fee Schedules
- Events and Seminars
- Forms Download
- FAQ & Glossary

Options under Resources:

- ▶ Types of Accounts
- ▶ Fee Schedules
- ▶ Investment Products
- ▶ Important Notices
- ▶ Forms
- ▶ Events and Seminars
- ▶ FAQ & Glossary
- ▶ Resources Overview





Change Password

Enter the requested information below and click "Update" to change your password. For security reasons, please change your password on a regular basis.

Type of Password Log In Password

Enter Your Current Password

Enter Your New Password **1**

Re-enter Your New Password

Clear Update

My Profile > Change Password

Account preferences may be adjusted under this tab.

- 1 Move cursor over the sign ! to view password criteria.



Update Personal Details

To change your mailing address, kindly do **1** [Update Form](#) and mail it back to us after you have completed it.

Mailing Address 12 Marina Boulevard #10-01
Marina Bay Financial Centre Tower 3
SGP

Home Number (Country Code/Area Code/Phone Number) [] [] 6XXXXXX5

Office Number (Country Code/Area Code/Phone Number) [] [] 6XXXXXX5

Mobile Number (Country Code/Mobile Number) [] 6XXXXXX5

Email Address INFO@DBSVONLINE.COM

Clear Update

My Profile > Update Personal Details

To update your particulars, you will need to log in using your 2FA secure device.

- 1 For update of address, click on [Update Form](#), print out the forms and return via post.



Set Alerts

Select your alert settings below and click on "Update"

Receive Trade Confirmation Alerts Email **1**
 Mobile Phone
 Receive an alert for every partial fill ⓘ

Receive e-Statement Alerts Email

Email and/or SMS alerts will be sent to you based on your contact details in our record. Please update your contact details if necessary under the "My Profile" section.

Note: DBS Vickers Online does not warrant that any electronic messages and/or alerts provided as part of the Services will be sent to and/or received by you.

Update **2**

My Profile > Set Alerts

- 1 Check the box to indicate the channel(s) you wish to receive alerts for trade notification.
- 2 Click on **Update** to confirm.



Customise this Site

Select your customised settings below and click on "Update"

Preferred language English

1

Sets the default language within the trading site

Preferred Font Size Regular

Sets the default font size within the trading site (Regular, Large)

Preferred Startup Page Home

Transfers you to your selected startup page on log in

Primary Account

Defines your default trading account

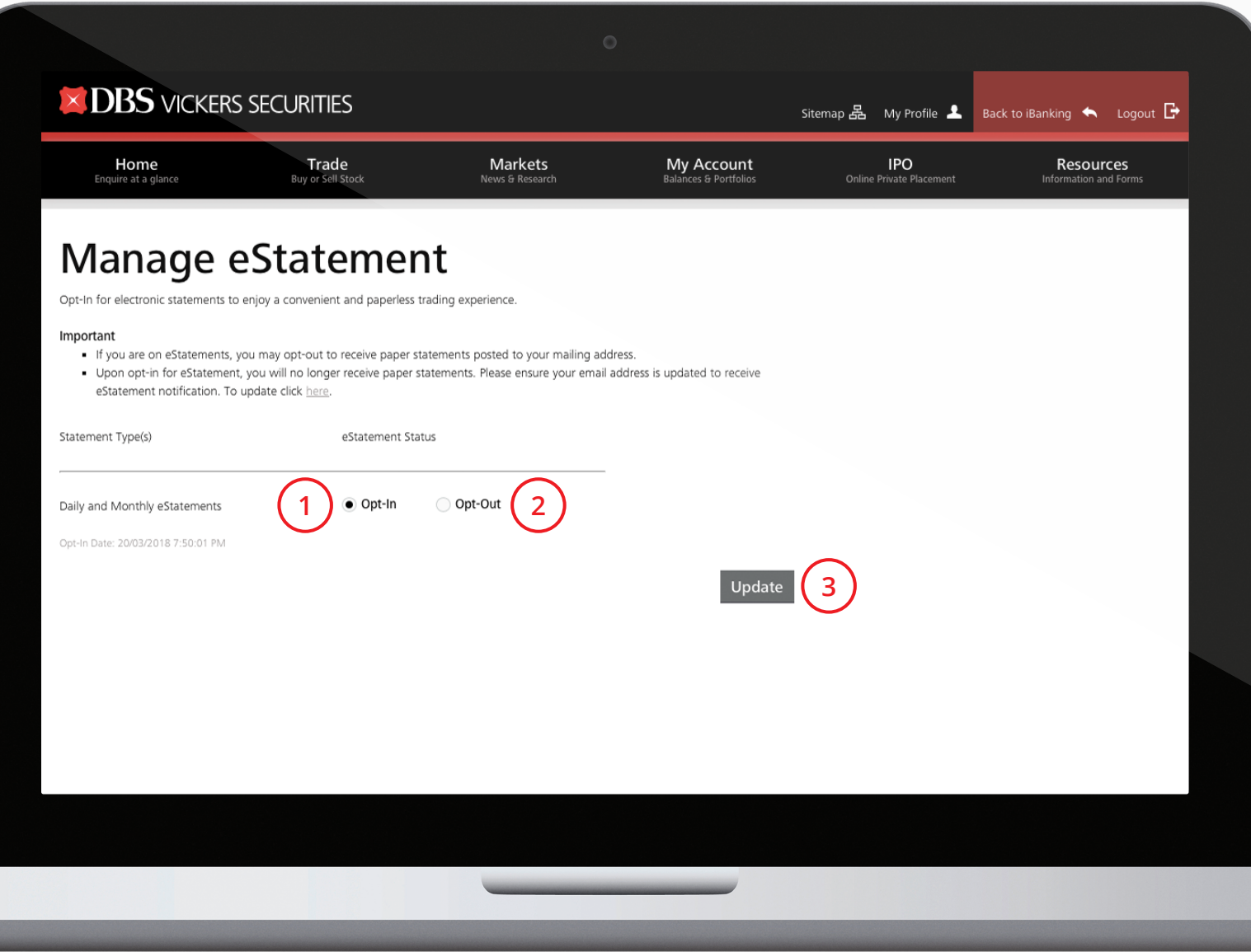
Update

2

My Profile > Customise Site

- 1 You may choose your preferred language, font size, start up page and primary account.
- 2 Click on **Update** to confirm.





My Profile > Manage eStatement

- 1 Choose opt-In for electronic statements to enjoy a convenient and paperless trading experience.
- 2 Choose opt-out to receive paper statements posted to your mailing address.
- 3 Click on **Update** to confirm.



"This information is published for general circulation only and does not have regard to the specific investment objectives, financial situation and the particular needs of any specific person. Investors should seek advice from a financial adviser regarding the suitability of the investment product, taking into account the specific investment objectives, financial situation or particular needs of each person in receipt of this document before making a commitment to purchase the investment product. In the event that the investor chooses not to do so, he/ she should consider carefully whether the product is suitable for him / her.

DBS Vickers Securities (Singapore) Pte Ltd accepts no liability whatsoever for any loss suffered howsoever caused arising from your participation in this programme."



Live more,
Bank less